

INHOUSE CABINET

Product description

Wall Mounted (Inhouse) Distribution Cabinet L SCB500

Standard colourways :

■ Light Grey 7035 RAL



Professional street cabinet used in FTTH projects. Excellent performance, flexible structure. For small and medium buildings. Easy installation process.

SCB500 is an innovative solution that is the optimal balance between size, density and access.

Optimal for cable protection.

Comb system for easy planning, blowing and splicing documentation.

Features and Benefits :

- Number of Flats: 1-36
- Wall Mountable Cabinet with all accessories
- 1-288 optical fiber
- Breakout possibility
- Rubber sealings elements $\varnothing 2 - \varnothing 12\text{mm}$
- PG for cable solution
- Connectors for microducts solution
- Different cable sizes
- Different lock systems
- Small series on customers demand

INHOUSE CABINET

Product description



Wall Mounted (Inhouse) Distribution Cabinet S/L

1. Comb system

Different combinations

Pipe/Cable entrance

Sizes 5mm, 7mm, 8mm, 10mm,
12mm, 14mm, 16mm

2. Cassettes + Holder + Cover + Mixer

Different options

Modules Standard / HD
Cassettes Shrink / Crimp

7. Core attachment

2 pcs. as standard

3. Mounting screws wall

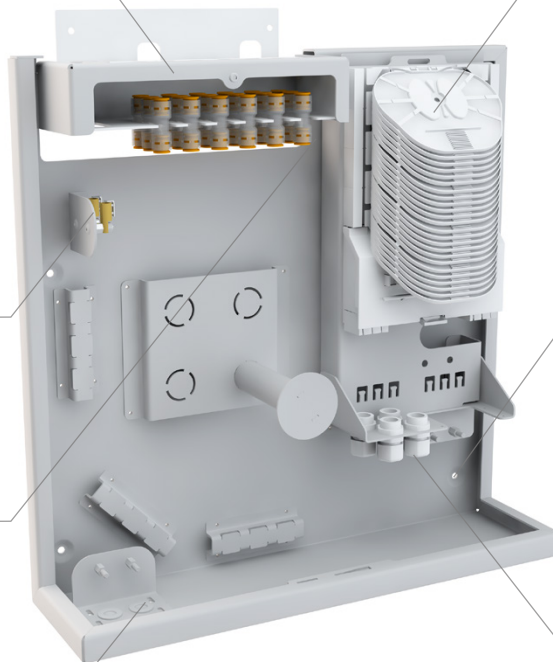
4 pcs. as standard

6. Connectors for Micorducts

4. Cable entrance support

5. Cable entrance insert

2 pcs. as standard



**Excellent mechanical
endurance.**



**Quick installation saves
time and money**



Long life



Light weight

INHOUSE CABINET

Product description

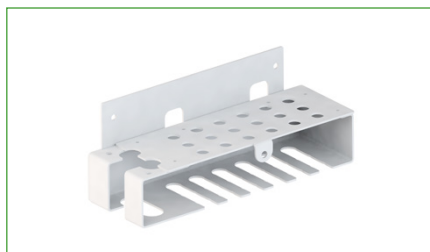
1. Comb System

Small series on customers demand.

Different combinations. Sizes 5mm, 6mm, 7mm, 8mm, 10mm, 12mm, 14mm, 16mm







1-12x



1-36x

2. Cassettes + Holder + Cover + Mixer

Splice Cassette Module 4mm	Holder	Cassettes type	Splices pro modul	Type
	Size 1	HD6 - 6 pro Modul	72 (6x12)	Crimp
	Size 1/3	HD6 - 2 pro Modul	24 (2x12)	Crimp
<ul style="list-style-type: none"> - High density - Crimp type 				
Splice Cassette Module 6mm	Holder	Cassettes type	Splices pro modul	Type
	Size 1	HD4 - 4 pro Modul	48 (4x12)	Crimp & Shrink
	<ul style="list-style-type: none"> - High density - Crimp & Shrink type 			
Splice Cassette Module 8mm	Holder	Cassettes type	Splices pro modul	Type
	Size 1	HD3 - 3 pro Modul	72 (3x24)	Shrink
	<ul style="list-style-type: none"> - High density - Shrink type 			
Splice Cassette Module 8mm SE	Holder	Cassettes type	Splices pro modul	Type
	Size 1	SE3 - 3 pro Modul	36 (3x12)	Crimp & Shrink
	<ul style="list-style-type: none"> - Crimp & Shrink type 			

INHOUSE CABINET

Product description

4. Cable entrance support



Size(mm.)	Art.Nr.
M20 5-11	42-35009
M20 7-13	42-35010

5. Cable entrance insert



Size	Art.Nr.
M20	42-350332
M25	42-350333
M32	42-350334

5. Straight Connector



Size(mm.)	Art.Nr.
3	28-PFTC003
4	28-PFTC004
5	28-PFTC005
6	28-PFTC006
7	28-PFTC007
8	28-PFTC008
10	28-PFTC010
12	28-PFTC012
14	28-PFTC014
16	28-PFTC016
20	28-PFTC020

6. Core attachment



Part	Art.Nr.
holder	43-965639

Cable entrance inset



Size(mm.)	Art.Nr.
M20 4x3	42-350631
M20 4x4	42-350632
M25 6x4	42-350812
M25 4x5	42-350811
M25 3x6	42-350809
M25 3x7	42-350810
M32 9x4	42-350625
M32 8x5	42-350626
M32 5x6	42-350627
M32 4x7	42-350628
M32 3x8	42-350629

Cable entrance filler



Size(mm.)	Art.Nr.
3	42-350633
4	42-350634
5	42-350635
6	42-350636
7	42-350637
8	42-350638